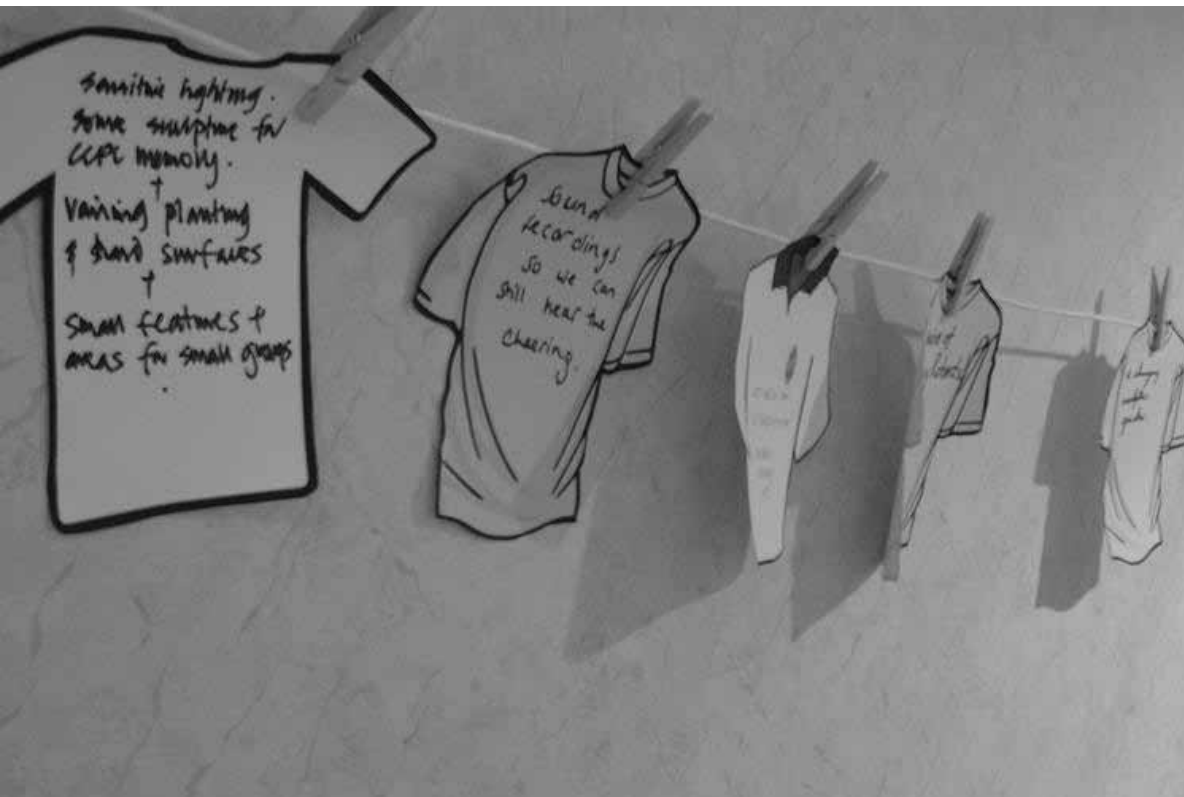




SOUND MEMORY FOR MILTON ROAD
END OF THE GAME AND FIELD OF PLAY
BY LIMINAL
www.liminal.org.uk

A brass whistle encased in a small timber and perspex box is discreetly hung in each of the new homes at Mitchams Park, built on the site of the old Milton Road football ground.

'End of the Game' commemorates the sound of the last game at Milton Road and provides a catalyst with which to celebrate the new community at Michams Park.



CONTEXT

The sound of the crowd who came to watch Cambridge City play at the Milton Road Ground, was identified by the KickstART project as important to the surrounding community.

The sound of the football crowd is a 'soundmark' that defined the area every Saturday. Following Cambridge City Football Club's move to a new ground, this 'soundmark' is now only a memory.

This lost soundmark signified the coming together of a community, whether they watched the game or only heard it from a distance. At 3pm every Saturday, on 'the whistle,' play began. Now only those people, who lived around the ground when the game was played at Milton Road, remember the sound.

With the new housing, comes a new community and the question we have been asked to address is how to create a memorial for this lost soundmark and in remembering the past help celebrate the new.

www.cambridgekickstart.com



END OF THE GAME

Liminal's 'End of the Game' remembers the lost 'soundmark' of the football crowd at Cambridge City's Milton Road ground. This lost soundmark signified the coming together of the wider community, whether they watched the game or only heard it from a distance. At 3pm every Saturday, on 'the whistle,' play began. Now only those who lived around the Milton Road ground when Cambridge City played, remember the sound.

An engraved brass whistle, encased in a box is hung discreetly in each new home, built on the site of the old football ground. The whistle remains silent except for once, annually, when it may be blown at 3pm within a 90-minute period, on the Saturday closest to the date of the last Cambridge City game held at the Milton Road football ground.

Deeds

Third Schedule
Part A or B

"The commemorative Art is called 'END OF THE GAME' and was conceived by Liminal it includes a brass ACME Thunderer whistle model 58 in a plywood and Perspex box, with seven commemorative cards.

The ACME Thunderer whistle within its display box is a memorial to the lost sound of the Cambridge City Football Club crowd. It is to remain silent in perpetuity with the sole exception of the closest Saturday to 27 April. On this day in 2013, Cambridge City Football Club played its last match at the Milton Road Ground. And on the last whistle the sound of the ground fell silent. To remember this, the whistle may be blown once annually from 3pm within a 90-minute period - the duration of the last match held on 27 April 2013. It should then be returned to its box in the property and remain silent until the following year."

END OF THE GAME: DEEDS

A clause inserted into the property deeds describes the whistle; when it can be blown and what happens to it when the property is sold again.

SAMPLE CLAUSE

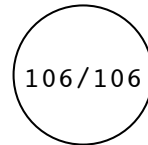
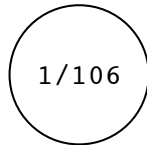
END OF THE GAME: ENGRAVING

106no. Whistles



Right side of whistle
when mouthpiece facing
towards you.

14pt Courier



Left side of whistle
when mouthpiece facing
towards you

Edition Numbers
aligned to
centre and running
1/106 to 106/106

Each of the whistles will be engraved with the name of the project on one side of the barrel and on the other side the edition number.

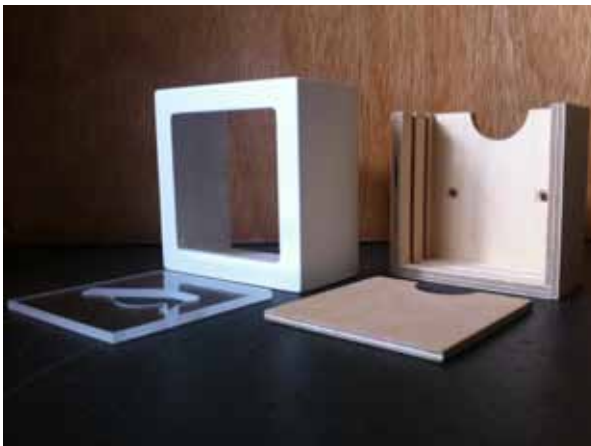
The whistles will be given out in order of each property sale.



CLOSED BOX (without acrylic slide)



OPEN BOX (without whistle)



BOX - SHOWING FIXINGS (without whistle)

END OF THE GAME: BOX

The whistle is housed in a wall mounted box similar in size to a wall mounted switch or socket box. The dimensions of which are 86.5mm square x 50mm deep.

The birch-ply box has a perspex slide inside the box which holds the whistle so that it hovers in the centre of the box.

A publication of seven commemorative cards is stored at the back of the box.

The smooth white cover will slide over the wall hung box and allow for the display of the whistle through the perspex front.

The box is fixed to the wall by 2no. 4mm screws



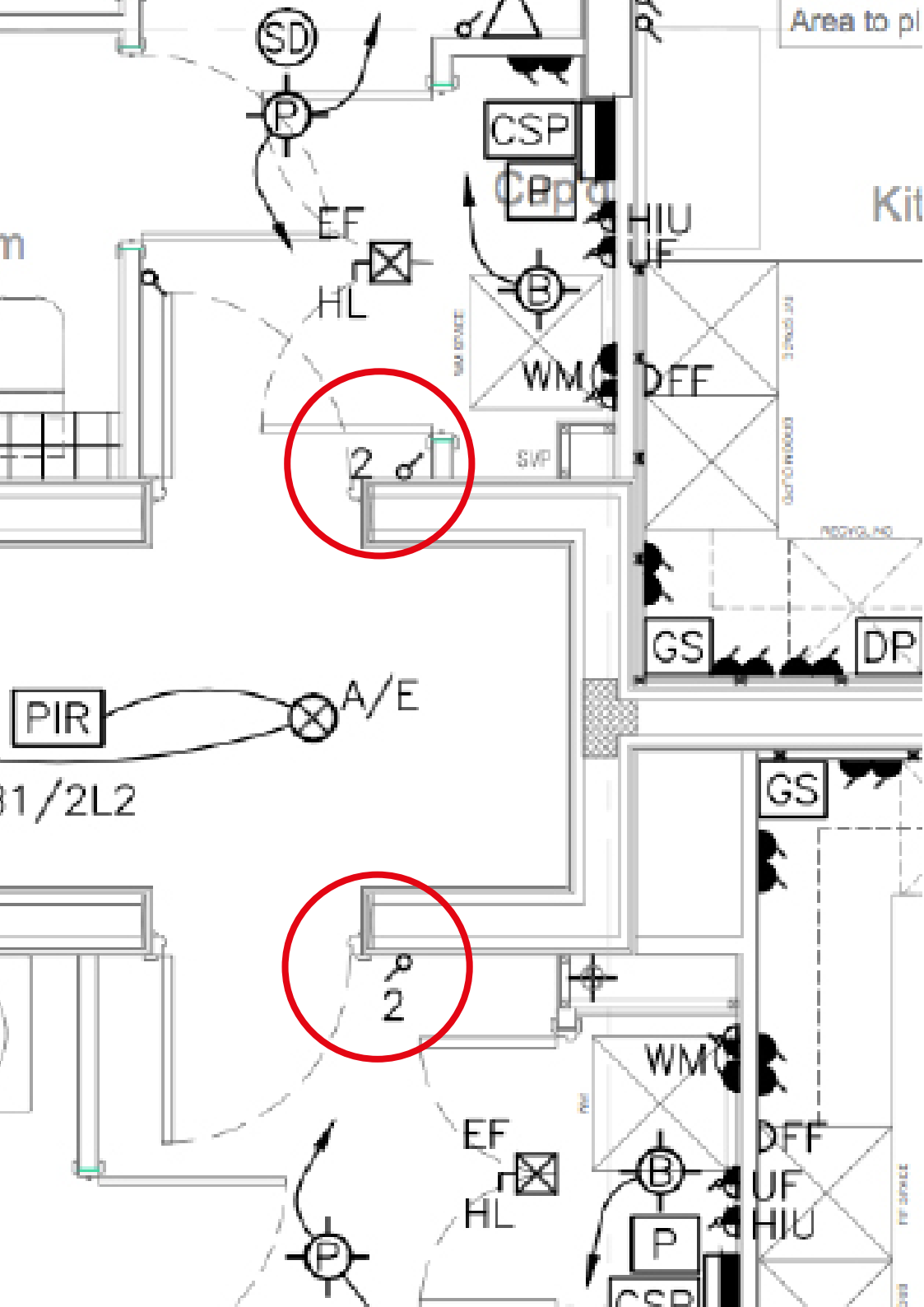
END OF THE GAME: PUBLICATION

The publication stored within the box outlines the wider project and the use of whistle.

There are a series of seven commemorative cards, the design of which are influenced by memorabilia from the Cambridge City Football Club.

The inaugural match on the Milton Road grounds was played on 29 April 1922. The last match played on the Milton Road ground was on 27 April 2013.

In Cambridge City Football Club's time at the Milton Road ground, special events like the inauguration of the floodlights in 1959 were celebrated with invitation matches and these matches were celebrated using official programmes and commemorative tickets.



END OF THE GAME: BOX LOCATION

The box is wall mounted and is fixed discreetly in the entrance hall to each property next to or above the 2-way light switch that is located next to the front door.



FIELD OF PLAY

'End of the Game' is part of the wider 'Field of Play' project

'Field of Play' is the inaugural community event to be held on Saturday 30th April 2016, to mark the final match played at Milton Road Football Ground and to celebrate the new community at Mitchams Park.

'Field of Play' was conceived by Liminal to contribute to Zoe Chamberlain's KickstArt Project, funded by Crest Nicholson. ADeC will coordinate the event, in collaboration with Zoe Chamberlain, Liminal and Kathryn Rowland.

'Field of Play' includes Zoe Chamberlain's 'Active Landscape'; a sculptural all-age play facility embedded in the site, Liminal's 'End of the Game'; a memorial to the lost sound of the football crowd and Kathryn Rowland's 'Spirit of Song'; a new anthem for Mitchams Park.

On the Saturday closest to the day of the last Cambridge City football match played at the Milton Road grounds on 27 April 2013, 'Field of Play' will encourage residents and the surrounding community to come together in an annual 'Field of Play' event.



THE ARTISTS

Liminal is an award winning collaborative arts practice, comprising architect Frances Crow and sound artist David Prior. Their work focuses on exploring the relationship between sound, listening and culture.

www.liminal.org.uk